

Repair and restoration of a Modified Bitumen Roof, using Karnak Materials.

## Brief Overview

Total Roof Area: 10,000 sq. ft.

This was a 6 step process to Clean, Repair, Prime, Seal, and Coat the roof.

Step #1 - Entire roof was wash & scrubbed down using #799 Wash-N-Prep to remove any dirt, grease, and debris present.

Step #2 - Roof was inspected and problem areas repaired using #229AR Elastomeric Trowel Grade & #5540 Resat-Mat as needed.

Step #3 - #111 Quick-Dry Primer was applied to entire roof.

Step #4 - #229 AR Elastomeric Brush was applied to flat areas & #220 Asphalt Emulsion Fibered applied to Sloped roof areas and allowed to cure 3-4 weeks.

Step #5 - After the coating was allowed to cure; the roof was again washed down to remove dust, dirt, excess oils.

Step #6 - #298 Alum-R was then applied to the flat & sloped areas of the roof completing the process.

Repair and restoration of a Modified Bitumen Roof, using Karnak Materials.

## Section 1 - Modified Bitumen Roof

Typical Cracking in Outside Corners & Previous Repairs to Problem Areas Reappearing

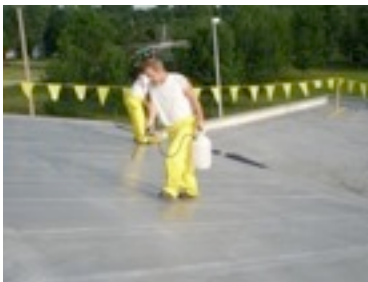


Cracking Present on inside Corners / Overall Break Down of Previously Product Coating



### *Cleaning Process*

#799 Wash-N-Prep Sprayed onto roof & scrubbed down to remove all dirt





### *Patch & Repair*

#229AR Elastomeric “Trowel” was used around roof drains & Vent Pipes

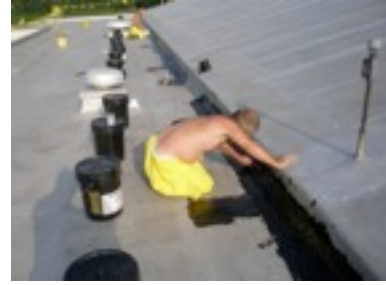


#229AR Elastomeric “Trowel” & #5540 Resat Mat used on cracks & corners of roof



#229AR Elastomeric “Trowel” & #5540 Resat Mat used on cracks in old surface material





### **Additional Preparation Work**

6" Eternabond Webseal applied to Ridge flashing on Sloped Roof



#229AR Elastomeric "Trowel" Applied over Webseal on Slope



### **Product Applications**

#111 Quick Dry Primer applied to Flat Roof (North Side) sections and allowed to dry





#229 Elastomeric “Brush” Applied over Primer on North Side Flat Roof (3 weeks dry time)



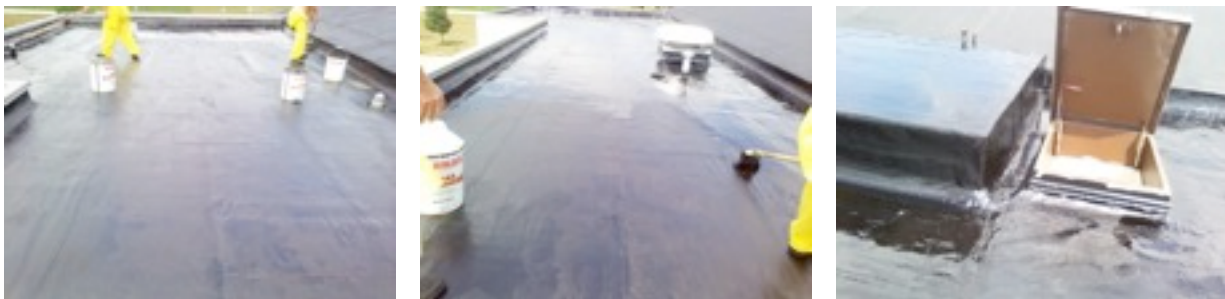
#220 Asphalt Emulsion Fibered applied to Sloped roof areas (3 weeks Dry Time)



#111 Quick Dry Primer applied to Flat Roof (South Side) sections and allowed to dry

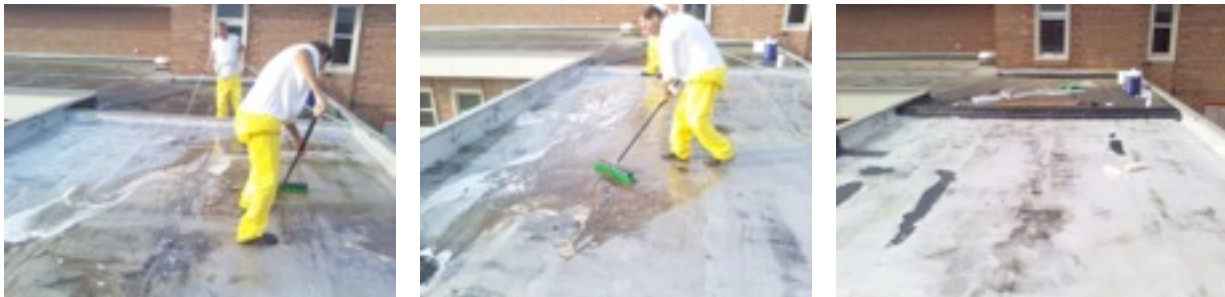


#229 Elastomeric “Brush” Applied over Primer - South Side Flat Roof (3 weeks dry time)



### 12’x43’ Breese Way Roof (Flat)

Roof Scrubbed Down (#799 wash) & Prepared for #111 Quick Dry Primer



#111 Quick Dry Primer applied to flat section and allowed to Dry (2-4 hrs)



#229 Elastomeric “Brush” Applied over Primer on Breese Way Flat Roof (3 weeks dry time)



### Application of final Coating - #289 Alumin-R Rubberized Coating

After a Three week curing time, the roof was washed down to remove accumulated dirt and #289 Alumin-R Rubberized Aluminum Coating was applied to the three flat roof sections & the Sloped Roof completing the final step for the Modified Bitumen Roof.





